

Client OpenVPN Windows

Per configurare la VPN di Ateneo su pc con sistema operativo Windows occorre installare un client VPN con relativo file di configurazione

Sono disponibili cliccando, dopo aver eseguito la login con le credenziali di Ateneo, ai seguenti link.

Download Client:

Client OpenVPN 2.4.3

1 file(s) 3.29 MB

Eeguire Login con le credenziali di Ateneo

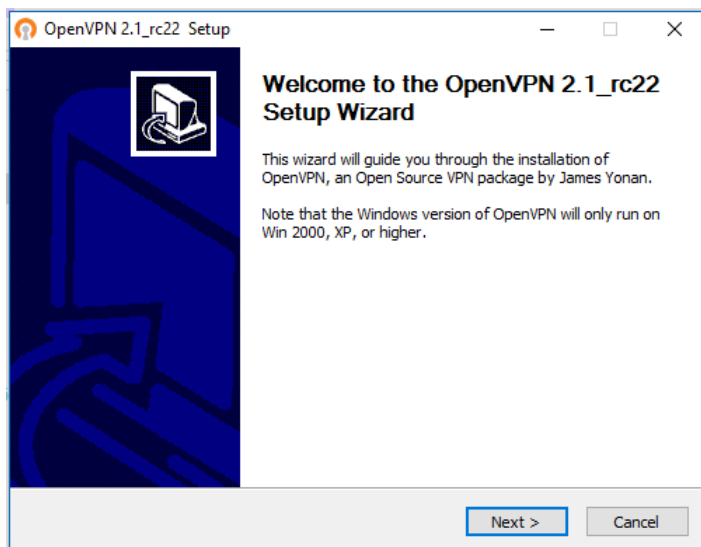
Download file di configurazione:

Configurazione OpenVPN

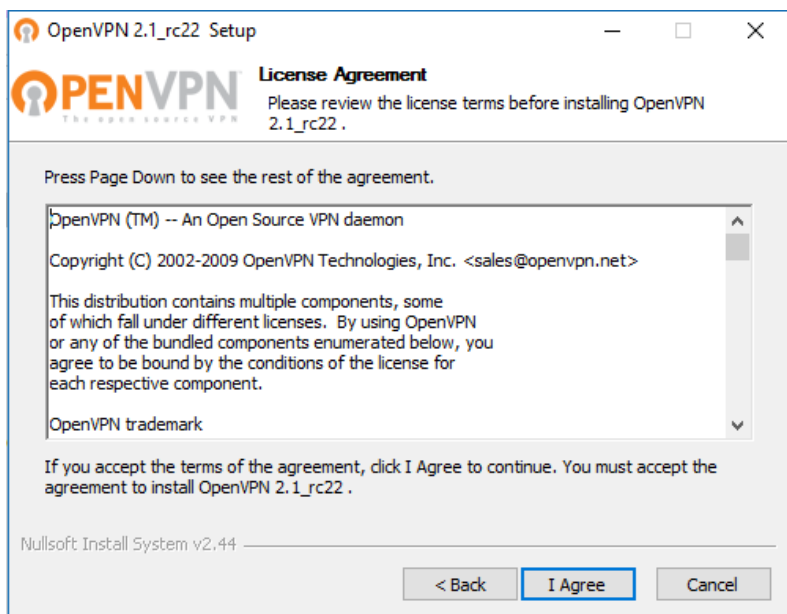
1 file(s) 5.39 KB

Eeguire Login con le credenziali di Ateneo

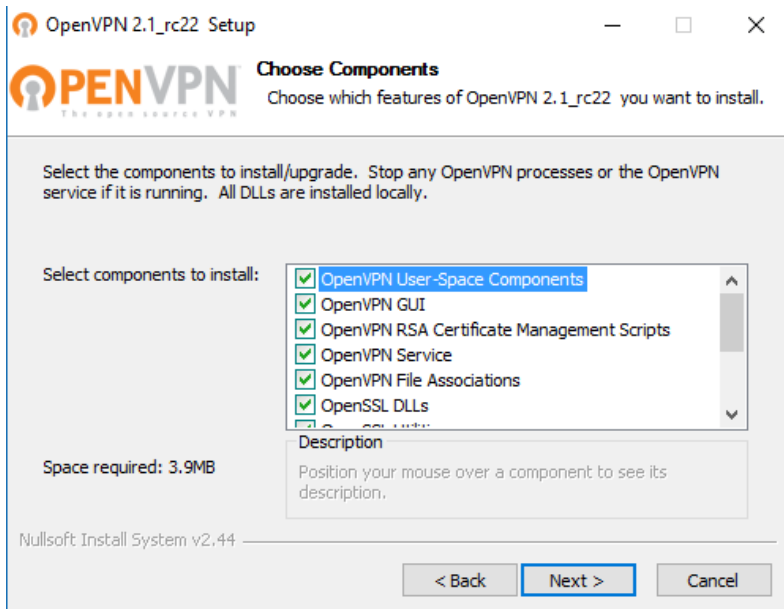
Per prima cosa installare il client OpenVPN



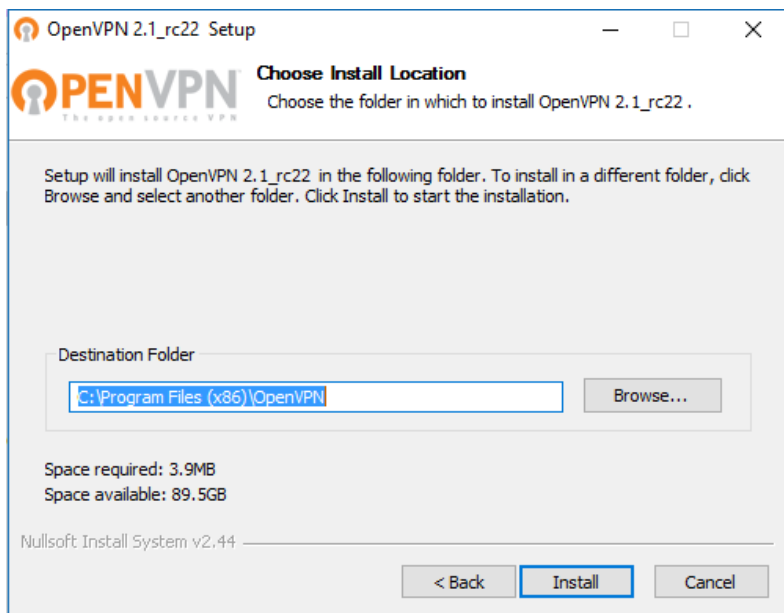
Cliccare su "Next"



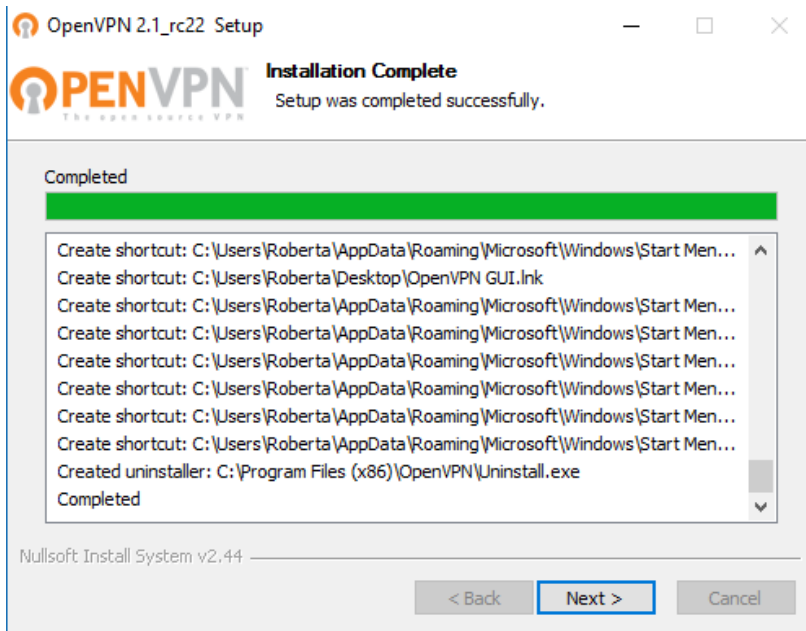
Cliccare su "I Agree"



Cliccare su “Next”



Cliccare su “Install”



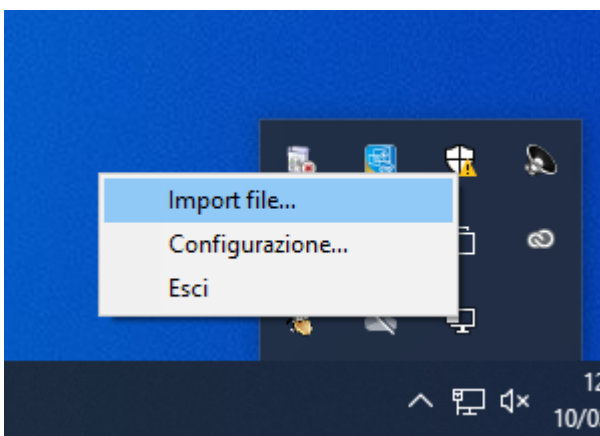
Attendere l'installazione e cliccare su "Next"

L'installazione del programma è terminato.

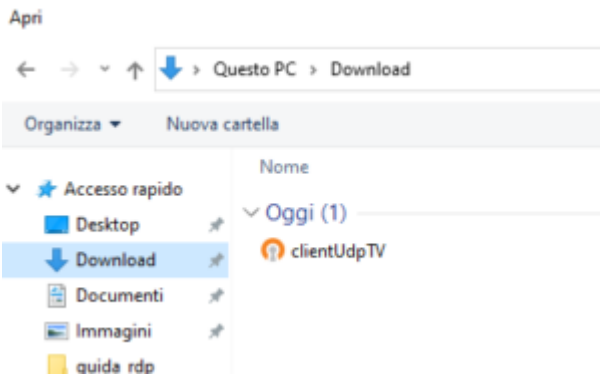
Eseguire il programma cliccando sull'icona



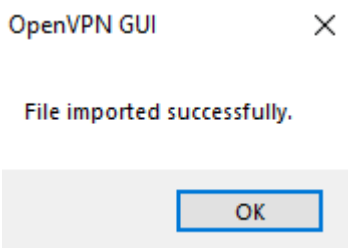
Cliccare con il tasto destro sull'icona in basso a destra e selezionare import file..



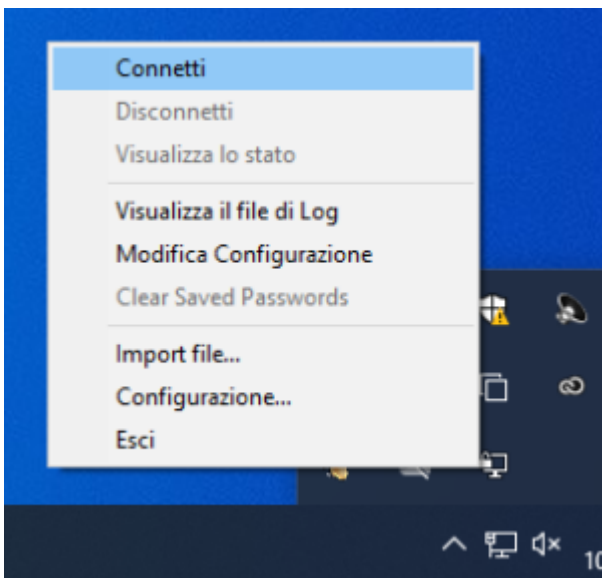
Selezionare il file scaricato "clientUdpTV"



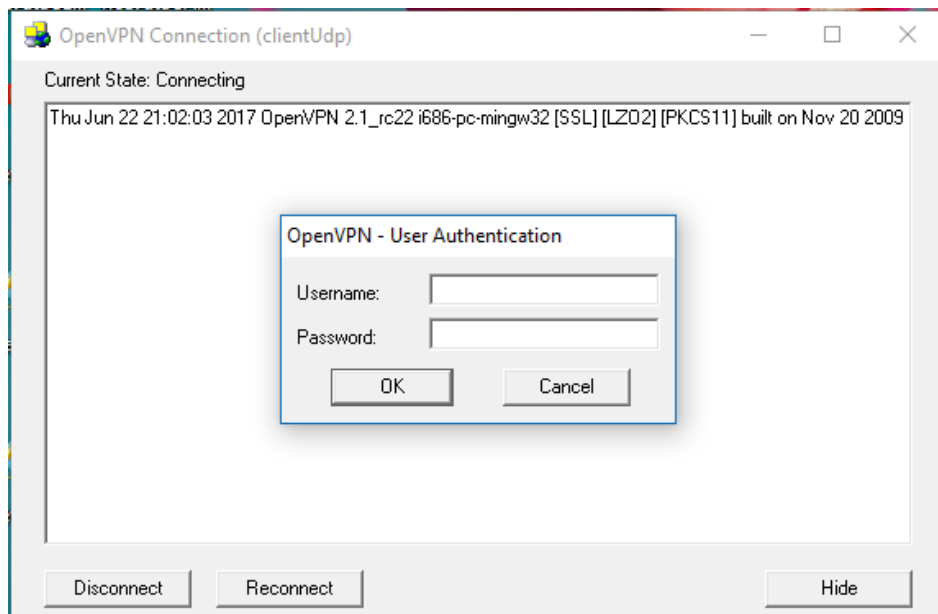
attendere la fine dell'importazione



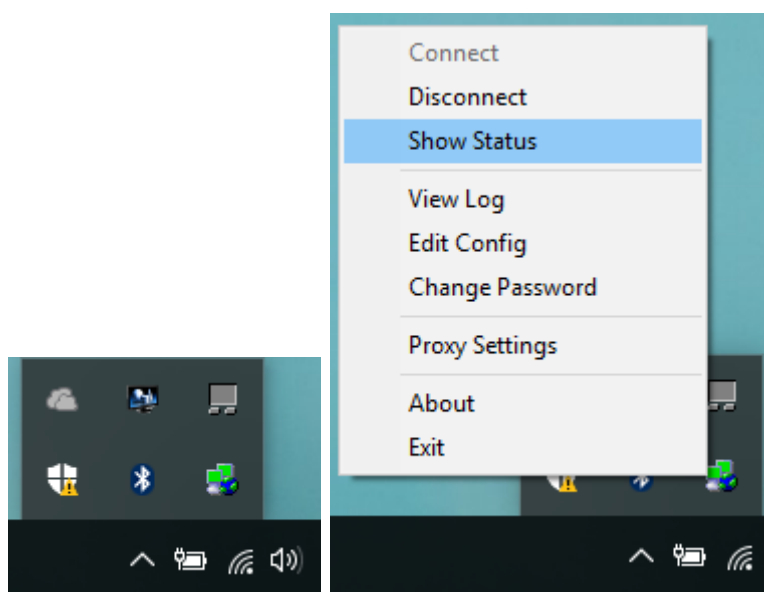
Per collegarsi in VPN cliccare con il tasto destro sull'icona e selezionare Connect



Inserire username e password usate per i servizi di Ateneo (es. posta elettronica webmail) e cliccare su OK



Se connessi, i monitor dell'icona diventeranno verdi e se ci clicchiamo col tasto destro possiamo verificare lo stato selezionando "show status"



e disconnetterci a lavoro effettuato cliccando su "Disconnect"

Current State: Connected

```
Thu Jun 22 21:02:49 2017 TAP-Win32 Driver Version 9.6
Thu Jun 22 21:02:49 2017 TAP-Win32 MTU=1500
Thu Jun 22 21:02:49 2017 Notified TAP-Win32 driver to set a DHCP IP/netmask of 172.16.17.14/255.255.
Thu Jun 22 21:02:49 2017 Successful ARP Flush on interface [40] {09712FBC-2C93-44E8-9CF5-04F763F7
Thu Jun 22 21:02:54 2017 TEST ROUTES: 2/2 succeeded len=1 ret=1 a=0 u/d=up
Thu Jun 22 21:02:54 2017 C:\WINDOWS\system32\route.exe ADD 160.80.5.200 MASK 255.255.255.255
Thu Jun 22 21:02:54 2017 ROUTE: CreateIpForwardEntry succeeded with dwForwardMetric1=55 and dwF
Thu Jun 22 21:02:54 2017 Route addition via IPAPI succeeded [adaptive]
Thu Jun 22 21:02:54 2017 C:\WINDOWS\system32\route.exe ADD 0.0.0.0 MASK 128.0.0.0 172.16.17.13
Thu Jun 22 21:02:54 2017 ROUTE: CreateIpForwardEntry succeeded with dwForwardMetric1=55 and dwF
Thu Jun 22 21:02:54 2017 Route addition via IPAPI succeeded [adaptive]
Thu Jun 22 21:02:54 2017 C:\WINDOWS\system32\route.exe ADD 128.0.0.0 MASK 128.0.0.0 172.16.17.
Thu Jun 22 21:02:54 2017 ROUTE: CreateIpForwardEntry succeeded with dwForwardMetric1=55 and dwF
Thu Jun 22 21:02:54 2017 Route addition via IPAPI succeeded [adaptive]
Thu Jun 22 21:02:54 2017 C:\WINDOWS\system32\route.exe ADD 172.16.17.1 MASK 255.255.255.255
Thu Jun 22 21:02:54 2017 ROUTE: CreateIpForwardEntry succeeded with dwForwardMetric1=55 and dwF
Thu Jun 22 21:02:54 2017 Route addition via IPAPI succeeded [adaptive]
Thu Jun 22 21:02:54 2017 Initialization Sequence Completed
```

Disconnect

Reconnect

Hide